



ENDAZHI-NITAAWIGING CHARTER SCHOOL

"THE PLACE WHERE IT GROWS CHARTER SCHOOL"

GIKINOO' AMAWISHIN MIINAWAA INGA-GIKENDAAS
"TEACH ME AND I WILL KNOW"

Mission: To prepare each student for college with an enhanced knowledge of the Ojibwe language, culture, leadership, and environmental stewardship.

Vision: Endazhi-Nitaawiging's vision is to create confident leaders grounded in their true inherent identities and to ensure that they are academically, socially, and spiritually prepared to positively change the community and world.

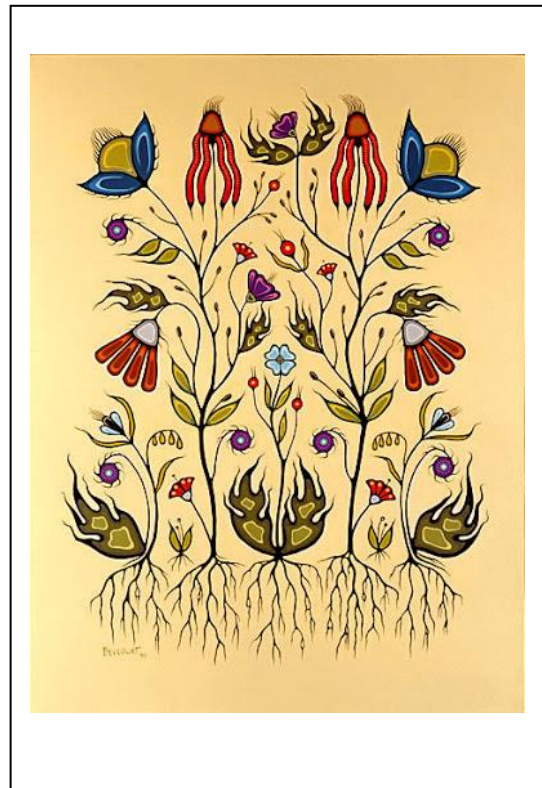
Endazhi-Nitaawiging will open Fall 2022 by enrolling students in grades K-5, and will add a grade each year until 2025-26, expanding to students in grades K-8.

Issue Background:

At the heart of Ojibwe culture is the connection between individuals and Mother Earth. The Red Lake Charter Schools aims to strengthen the Red Lake Nation by providing our children with an education grounded in Ojibwe values that is academically rigorous and celebrates Indigenous culture.

Anishinaabeg (Indigenous people) did not separate themselves from the land; our Mother Earth's connection is the umbilical cord to our existence. Indigenized education is the restoration of who we are to the places we call home.

The intellectual framework will be constructed based on our relationship with the land, air, water, plants, and animals. We are firm believers in the Indigenous genius among our people. We will embrace our Indigenous resiliency through our educational platform.



Project Elements:

- Established Founding Board
- Collaborative community stakeholders
- School Application submitted 1/21
- Beginning enrollment capacity 70 students
- Establish 501-C3 and launch fundraising campaign

Art by Christi Belcourt , Manitou Sakhigan (First Nation)

- Endazhi-Nitaawiging Charter School will open Fall 2022

Core Values:

- Ojibwe Language and Culture Revitalization and Preservation
- Indigenized Education

Goals and Outcomes:

- Environmental Sustainability
- College and Career Readiness
- Health and Wellness
- Leadership Development
- Land-Based & Experiential Learning
- Community Engagement